

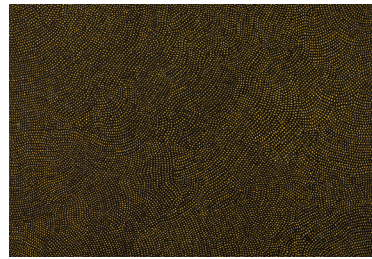


Chinese Gallery

Imperial vase with bats and clouds
Chinese, Jingdezhen, Qing dynasty
1736–1795

The Chinese language is highly complex and visual, comprised of thousands of characters that contribute to a rich vocabulary of symbolism. The use of homophones, sets of words with the same pronunciation but different meanings, is common. The words for “bat” and “happiness” are examples; they are both pronounced *fu*. The combination of the fluttering bats and stylistic clouds communicates a thoughtful wish to the viewer: “May your happiness be as high as the heavens.”

Can you think of any homophones in your language?



Modern and Contemporary Gallery

Infinity Nets
Yayoi Kusama
1959

Yayoi Kusama’s *Infinity Nets* are an ongoing series of paintings displaying an obsessive repetition of crescent-shaped brushstrokes that create a never-ending net across the canvas. In 1957 Kusama moved from Japan to the United States, where she lived for fifteen years before moving back to Japan. On her flight across the Pacific Ocean, she watched the endless sea of rolling waves swell and crest. This inspired her *Infinity Nets* series.

Look closely at the painting. Do you see any patterns or shapes emerge from the dots? Take a few steps back. What do you see now?

There’s more to do and see at the UMFA. Take a deeper dive into the art by using your smartphone to download the free UMFA Audio Guide from the app store or via <http://umfa.oucell.com>. No smartphone? Borrow one from the welcome desk. Connect to UGuest Wi-Fi for access.



African Gallery

Beaded Crown
Unidentified artist
Yoruba peoples, Nigeria
20th century

A vibrant headdress of this type is worn by the *Oba*, a male ruler of the Yoruba people, to communicate his authority. Although the intended wearer is male, the symbols adorning the headdress represent both male and female power. Perched on top, the bird symbolizes the female power that balances masculinity, since the *Oba* cannot rule without the support of the women in his village.

Why do you think the Yoruba people depict male and female power together? Can you think of another instance where a balance of power is necessary?



Pacific Gallery

Mask
Unidentified artist
Asmat people, Papua, Indonesia
20th century

Masks like this one are used in Asmat mask feasts, where people welcome the spirits of the dead back to the community for a brief period of time to feast, dance, and celebrate. Each body mask represents a specific ancestor and is typically worn by a male relative. At the end of the feast, the spirits depart the community and travel to *safan*, the realm of ancestors.

If you could have dinner once more with someone who has died, who would it be?

Ready to rest? Explore more art content and charge your personal devices at our new Trailhead, Lookout, or Basecamp conversation areas. Finally, grab a bite to eat at The Museum Café and find the perfect memento at The Museum Store.

Highlights Guide

UMFA
UTAH MUSEUM OF FINE ARTS

There are hundreds of original art objects to see in our galleries, many of them new on view since the UMFA reopened. Whether you're a first-time visitor or a regular, this self-guided tour will introduce you to a few collection highlights and encourage you to connect them with your own experiences.

Please help us protect the art by keeping food and drink out of the galleries and by looking but not touching.

Thank you and have fun!



Sculpture Terrace

Moods of Time: Morning
Paul Manship
1938

If this sculpture could talk, it would tell you that it's time to wake up. It's part of a group of sculptures called *Moods of Time: Morning, Day, Evening, and Night*. Paul Manship was keenly interested in the passage of time and believed that a major purpose of art was to reconcile the passage of time with permanence.

What symbols do you see that represent morning? What "Mood of Time" are you?



American and Regional Gallery

View of Salt Lake Valley
Henry Culmer
ca. 1900

Henry Culmer, a graduate of the University of Utah, enjoyed the western landscape and painted its mountains and deserts throughout his artistic career. In this painting, however, Salt Lake Valley and the growing city are his subjects.

How does this view of Salt Lake City differ from the view today? Where do you think Culmer was located when he observed this scene?



Mesoamerican Gallery

Pair of burial or cache urn bases
Guatemala, Peten region, Maya culture
600–900 C.E.

These large matching urns are decorated with the striking and symbolic face of the Mayan god G1 (a name given by scholars) from the ancient city Palenque. G1, part of a triad of gods along with G2 and G3, was an aquatic deity that was also associated with the sun. Together, the triad established a mythical charter to give Palenque a higher status than other Mayan cities.

Can you spot these features of G1's face: swirling eyes, fish fin cheeks, an eagle-like nose, sharp teeth, and horseshoe-shaped beads?



Ancient Mediterranean Gallery

Anthropoid Coffin
Egyptian
664–525 B.C.E.

Now empty, this coffin once contained the mummified body of a man named Padiusir. Ancient Egyptians believed in the *ka*, an individual's spiritual twin. If not properly cared for, the *ka* could wither away, so Egyptians expended large amounts of money and time protecting and caring for the dead. Combined with the mummification process and other rituals, this coffin protected Padiusir and his *ka* in the afterlife.

Imagine you live in ancient Egypt. How do you want your *ka* to be protected and cared for?



European Gallery

Dance Around the Maypole
Pieter Brueghel the Younger
1625–1630

Pieter Brueghel the Younger painted this humorous scene of villagers partying and overindulging on May Day, a traditional holiday celebrating the arrival of spring. At first glance, you'll see people dancing around the maypole, but if you look closer, you'll notice revelers of all types (some more mischievous than others!).

How many different kinds of partygoers can you find in this bawdy piece? Can you spot people playing cards, vomiting, skinny-dipping, playing the bagpipe, fainting, drinking alcohol, and urinating?



South Asian Gallery

Shiva with Parvati (Uma-Mahesvara)
Indian, central India, Kajuraho region
10th–11th century

This sculpture depicts the lovebirds Shiva and Parvati, whose romance begins with Shiva playing hard to get. One legend describes how Shiva, in deep meditation, spent thousands of years ignoring Parvati. After her countless attempts to get Shiva's attention, Parvati herself began to meditate—which made her inner power grow so strong that Shiva felt Parvati's presence and finally awoke from his own meditation. In the end, Parvati won Shiva's affection and the two were married.

Consider their story. How long would you wait for true love?