

# GALLERY GUIDE

## Family Guide

---

Explore with your senses!





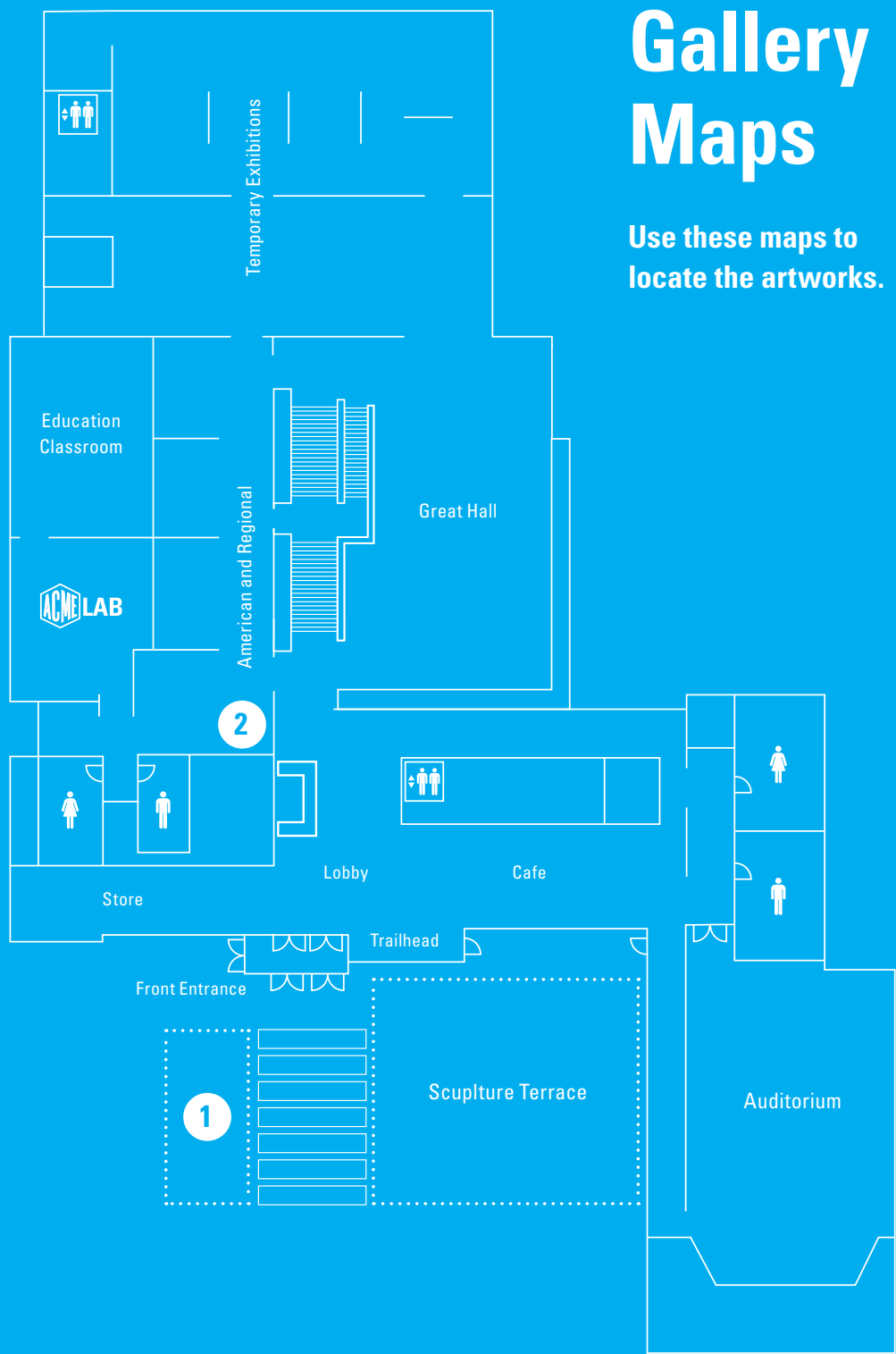
## A young boy with glasses, seen from the side, is looking at a laptop screen. The entire image is tinted with a strong blue/cyan color.

Please help us protect the art. Look but don't touch. No food or drink in the galleries. Thank you and have fun!



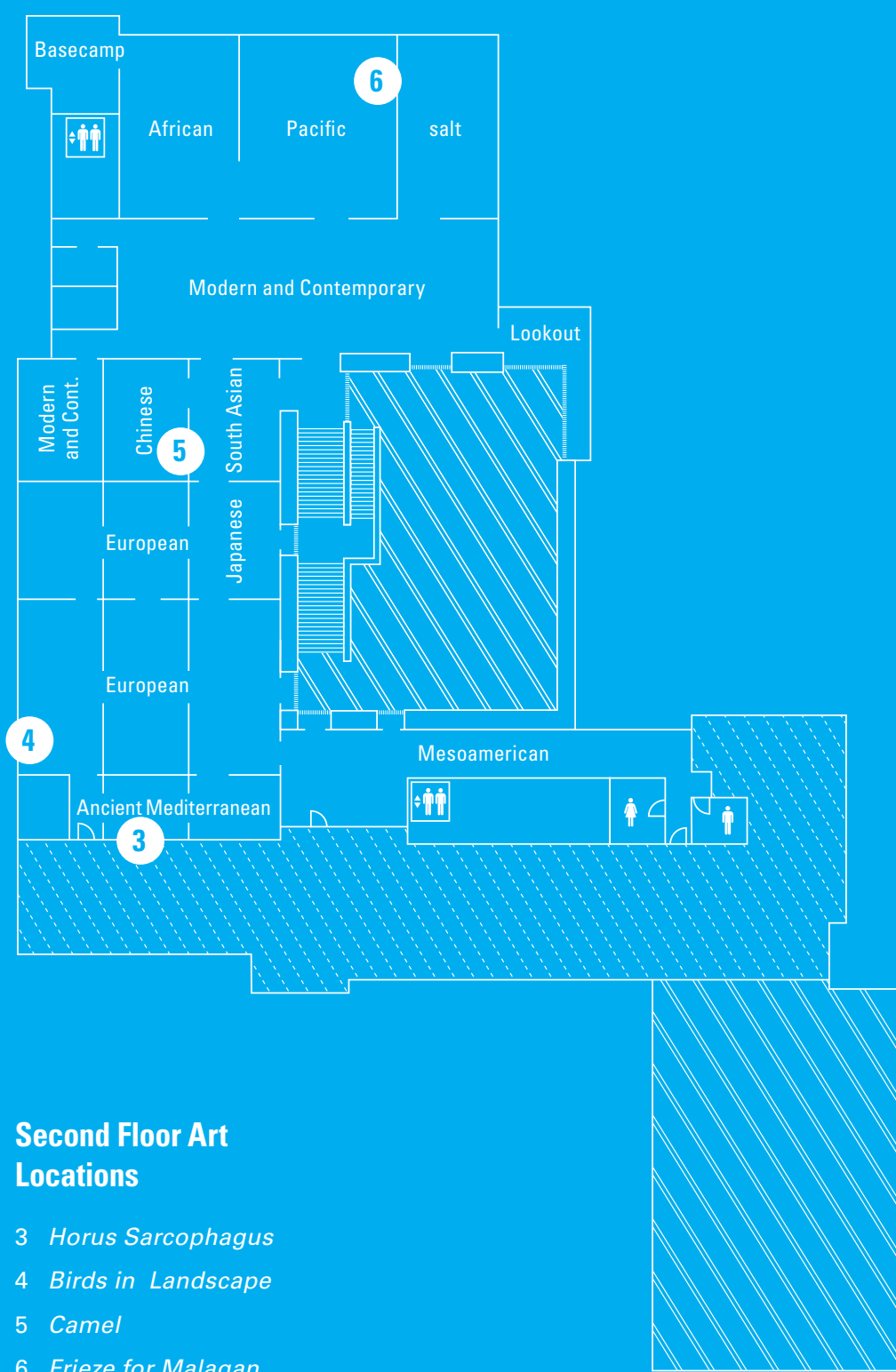
# Gallery Maps

Use these maps to locate the artworks.



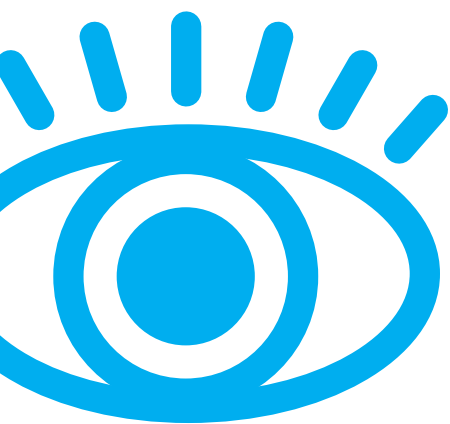
## First Floor Art Locations

- 1 *Rex*
- 2 *Battle of the Bulls*



**Second Floor Art Locations**

- 3 *Horus Sarcophagus*
- 4 *Birds in Landscape*
- 5 *Camel*
- 6 *Frieze for Malagan Display*



# Fool Your Eyes

*Rex*

**Deborah Butterfield**

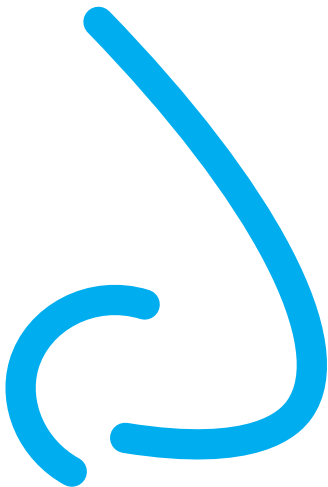
**2002**

**Location: Sculpture Terrace**

What is this sculpture made of? (Remember that we can't touch it.) Do you think it would be light or heavy if you could pick it up?

Rex appears to be made from driftwood, but the sculpture is actually created from pieces of bronze painted to look like driftwood. See the small sample of bronze attached to the label next to Rex? **Touch** the bronze piece and move your hand along it. Is it colder or warmer than you expected? Why would the artist want this horse to look like driftwood instead of bronze?





# Sniff, Sniff

## ***Battle of the Bulls***

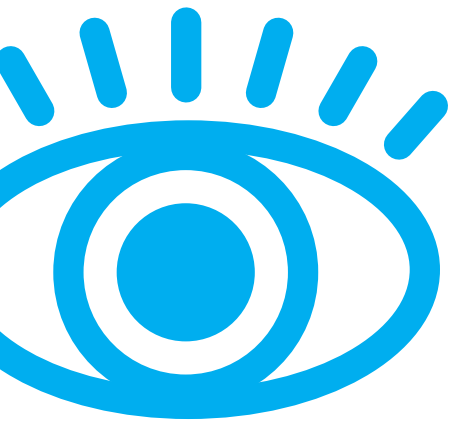
**Minerva Kohlhepp Teichert  
circa 1946**

**Location: American and Regional Gallery**

Imagine standing right in the middle of this scene: dust swirling around you, loud bulls running around, horses rearing up. Now close your eyes and imagine what it **smells** like.

The artist has given you some clues: notice the whirling dust, plants, and other features of the desert landscape, and look at how hard the horses are working. All of these clues can help you sense and understand the scene that Teichert has painted. Try describing the smell to someone you are with.





# Eye Spy

## *Horus Sarcophagus*

**Egyptian, Ptolemaic Period**

**304B.C.E.–30B.C.E.**

**Location: Ancient Mediterranean Gallery**

**Look** at the Horus Sarcophagus. Horus was the ancient Egyptian sky god usually portrayed as a falcon. While fighting his uncle Seth to avenge his father's death, he lost one of his eyes. The eye was restored and became a symbol of protection and royal power. You can see the symbol of the Eye of Horus on a blue ring right below the sarcophagus.

The Eye of Horus was often painted or carved on coffins, giving the dead the power to see again. Can you find the Eye of Horus drawn on the coffin in the middle of the room? How many can you find?







# What's That Sound?

***Birds in a Landscape***  
**Melchior d' Hondecoeter**  
**1656–1695**

**Location: European Gallery**

Stop and **listen** to this painting. What sounds do you imagine? Is the scene loud or quiet?

There are so many birds in this painting. The artist was an expert at painting birds and painted many different kinds over and over again. People paid him to paint scenes of birds they could display and look at in their own homes. If you were really good at painting one thing, what would it be?



# Yum!

## ***Camel***

**Chinese (T'ang Dynasty)**

**618–906**

**Location: Chinese Gallery**

Why would ancient Chinese potters make a beautiful sculpture of a camel? Camels transported food, minerals, and material along the Silk Road from China to the Middle East. This made them important and valuable.

Spices were among the most popular traded goods. Have you ever **tasted** cinnamon, pepper, ginger, nutmeg, or turmeric? Imagine riding this camel in ancient China as it carried these valuable spices to sell. Where would the camel carry you and the bags of spices? How long would it take you to complete your journey?





# Sixth Sense

*Frieze for Malagan Display*

**Unidentified Artist**

**New Ireland, Papua New Guinea**

**20th century**

[Location: Pacific Gallery](#)

This sculpture, which features animals, is made for a ceremony that honors family members who have died. Often, sculptures like this show birds in the sky and snakes on earth fighting with each other as they struggle to keep the world in balance. Which different animals can you see?

How might this sculpture honor the person who has died? What symbols would you put on a sculpture to honor one of your family members? Can you **sense** what animals that person would like?

# Keep Exploring

There's more to do and see with your family at the UMFA.

- Take a break, explore family-friendly art content, and charge your personal devices at the **Basecamp** conversation area in the southeast corner of the Museum, near the African Gallery on the second floor.
- Check out a free **Family Backpack** at the welcome desk to connect with more art through hands-on activities and art making.
- Grab a bite to eat at **The Museum Café** or find the perfect treasure in **The Museum Store**.
- Join us for **free family art making** every third Saturday of the month.







