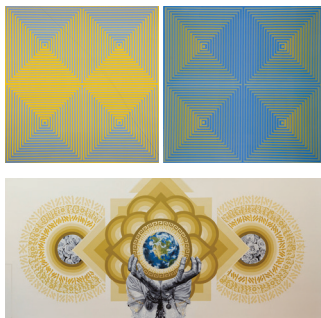


CREATIVE LEAPS

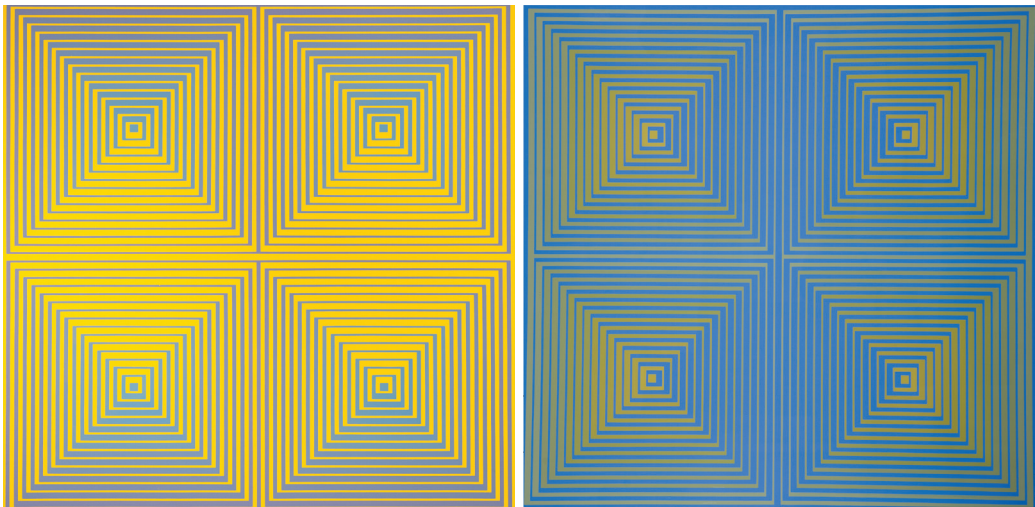
ABOUT THE ARTWORKS



UMFA
UTAH MUSEUM OF
FINE ARTS

RIRIE-
WOODBURY
DANCE
COMPANY





Anna Campbell Bliss
(American, born 1925–2015),
*Series III Spectrum Squared,
Variation A and J*, 1973,
serigraphs, paper, purchased
from the artist with funds from
the National Endowment for the
Arts, the Associated Students
of the University of Utah,
Friends of the Art Museum
and Mrs. Paul L. Wattis,
UMFA1975.046.007.001-006.

Anna Campbell Bliss

- **What is the first thing you notice about these artworks?**
- **Can you find examples of the elements of dance and visual art in her work?**

(You might think about color, line, shape, space, texture, time, and energy!)



ANNA CAMPBELL BLISS was born in Morristown, New Jersey in 1925. She graduated with an undergraduate degree in art history from Wellesley College and a masters degree in architecture from Harvard University. She also studied engineering at New York University, as well as painting, printmaking, and color theory.

<https://www.utahwomenshistory.org/bios/anna-campbell-bliss/>



Lynette Yiadom-Boakye (British, born 1977), *Periphery*, 2013, oil on canvas, purchased with funds from The Phyllis Cannon Wattis Endowment Fund, UMFA2013.3.1.

Lynette Yiadom-Boakye

Unlike traditional portraits which use clothing and surroundings to help tell a story about a person, Lynette Yiadom-Boakye's paintings are more mysterious. In this painting, a figure wears simple clothing against an abstract landscape or background. This figure could be anyone, anywhere.

- **The artist creates her figures with expressive brushstrokes of oil paint on canvas to create emotion in her artwork. How do you think the person in this painting feels?**



LYNETTE YIADOM-BOAKYE is a contemporary artist from London, England, whose family is from Ghana. She uses painting techniques from the 1800's to represent Black figures. She wants to draw attention to the fact that people of color are rarely seen in European art.

https://jackshainman.com/artists/lynette_yiadom_boakye



Ezra Wube (Ethiopian, born 1980), *Twilight Galaxies*, 2017, still provided by the artist, 7 minutes 51 seconds. Purchased with funds from Phyllis Cannon Wattis Endowment Fund, UMFA2018.16.2.

Ezra Wube

This artwork, *Twilight Galaxies*, was created using everyday materials that are often found at parties of immigrant communities in the artist's neighborhood in New York. In this stop motion animation, viewers see paper plates, plastic cups, and folding tables spin, float, and repeat across a cosmic landscape while familiar noises of friendly gatherings mix with strange, otherworldly sounds.

- **What materials would you use to create an artwork about your favorite family or holiday celebration?**



EZRA WUBE, who immigrated from Ethiopia to Brooklyn, NY is a mixed media artist. He uses many different materials in his artworks to explore ideas about time: the past and present, the constant changing of place, and the difference between “here” and “there”.

ezrawube.net



Chakaia Booker

Chakaia Booker (American, born 1953), *Discarded Memories*, 2008, tires, wood, metal, and paint, purchased with funds from the UMFA Young Benefactors and The Phyllis Cannon Wattis Endowment Fund, UMFA2009.15.1A, B.

While Booker's art-making materials highlight a throw-away culture, her new forms are also symbols for hope and transformation.

- The artist titled this sculpture *Discarded Memories*. Why do you think she gave this artwork that title? Do rubber tires play a part in any of your memories?



CHAKAIA BOOKER is an artist who creates sculptures from found materials. In this piece, she has sliced, twisted, woven, and riveted thrown-away tires to highlight their patterns. Visible wear and tear of the tires suggests human aging. The tire itself can represent industrialization, consumer culture, urban waste, and environmental concerns.

<https://chakaiabooker.com/>



Roots Art Kollektive (Miguel Galaz (Mexican, born 1990), Luis Novoa (American, born 1993), Alan Ochoa (Mexican, born 1994)), *Fuerza del Amor*, 2021, acrylic and metallic paint. Commissioned by the Utah Museum of Fine Arts.

Roots Art Kollektive

Mural description from the artists:

“The main message of this mural is about holding onto the memories that made us value life during the pandemic. With this mural we are honoring the value of the journey through life and death. The idea that being alive gives us the opportunity to appreciate the value of life/time and start again.”

- The English calligraphy on the left side of the mural says, “Find strength in love to heal.” On the right, the Spanish calligraphy reads, “Encuentra fuerza en el amor.”
- What do you think the hands holding the Earth represent or symbolize?

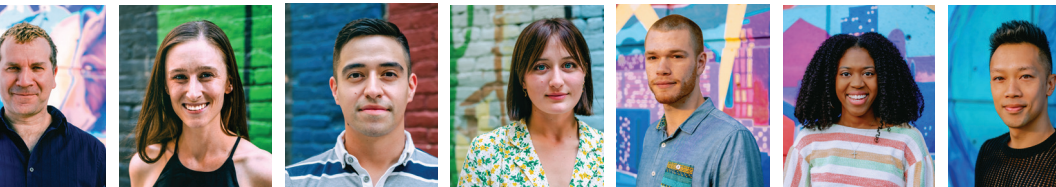


ROOTS ART KOLLEKTIVE's mission is to create art that redefines the cultural space we embody through the use of nature, patterns, and calligraphy. The intention of their murals is to help us heal and reflect the complexity of our times. Roots Art Kollektive is Miguel Galaz, Luis Novoa, and Alan Ochoa.

<https://www.rootsartkollektive.com/>

CREATIVE LEAPS

ABOUT THE ARTISTS



UMFA
UTAH MUSEUM OF
FINE ARTS

RIRIE-
WOODBURY
DANCE
COMPANY





DANIEL CHARON is the Artistic Director of the Ririe-Woodbury Dance Company and hails from Moorhead, Minnesota. Daniel enjoys his three cats, three fish tanks, cooking, reading, and making dances.



MEGAN MCCARTHY comes from Portland, Oregon. Megan studied dance at California Institute of the Arts. She loves K-POP, spicy food, and all kinds of animals.



FAUSTO RIVERA (he/they) is a Chicano dance artist from the Pacific Northwest. He grew up training in Mexican Folk Dance, and trained in ballet and modern dance at the University of Washington, where he graduated with a BA in Dance and a minor in Anthropology.



CORINNE LOHNER is a movement artist from Dallas, Texas. Corinne creates art that exposes humanity and comments on conditions. Corinne loves reading and writing her own stories.



PETER FARROW was born and raised in Richmond, Virginia. After graduating from the Julliard School, he performed in a show called Sleep No More in NYC until early 2020. This is Peter's first season with Ririe-Wodbury!



MICHE' SMITH is a dancer, actor and choreographer from Gautier, Mississippi. She grew up training where her mother and aunt trained, leading her to chase a life in the arts in pursuit of telling stories which would inspire and empower others.



ALEXANDER PHAM (he/they) is a first generation Vietnamese American dance artist from Minneapolis, Minnesota. He studied at the University of Minnesota and holds a BFA in Dance and a BS in Human Resource Development with dual honors.

NARRATORS



AI FUJII NELSON (she/her) is the Education Director of the Ririe-Woodbury. She is originally from Tokyo, Japan. Ai received her Masters degree in Creative and Performing Arts in New Zealand. She loves riding her motorcycle.



ANNIE BURBIDGE REAM is a Co-Director of Learning and Engagement at the Utah Museum of Fine Arts. She is a graduate in Art History from the University of Utah and is building creative confidence through small artistic acts from embroidery to collecting dirt samples. Annie is from SLC, UT.

Ririe-Woodbury dancers, the directors, and the narrators for the film are a diverse group of people who come from all over the map! Can you find all the cities they come from?

